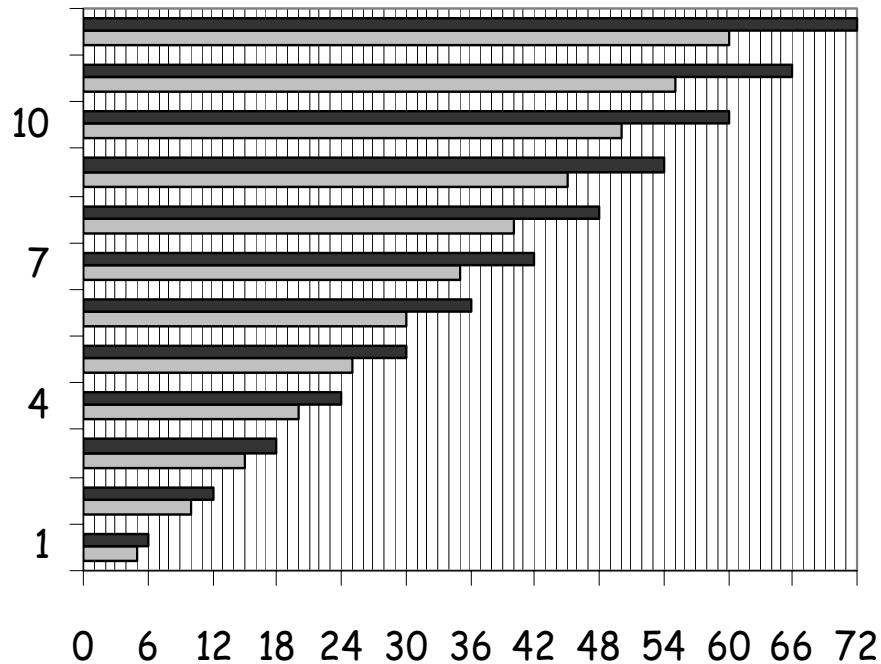


Name _____

Study the bar graph before answering the multiplication sums.

5 & 6 times tables



■ 6 times table
■ 5 times table

7x5=

4x6=

9x5=

3x6=

12x5=

11x6=

8x5=

12x6=

5x5=

7x6=

10x5=

9x6=

What is the difference between 9x5 and 9x6?

What is the difference between 12x5 and 12x6?

What is the difference between 7x5 and 7x6?
