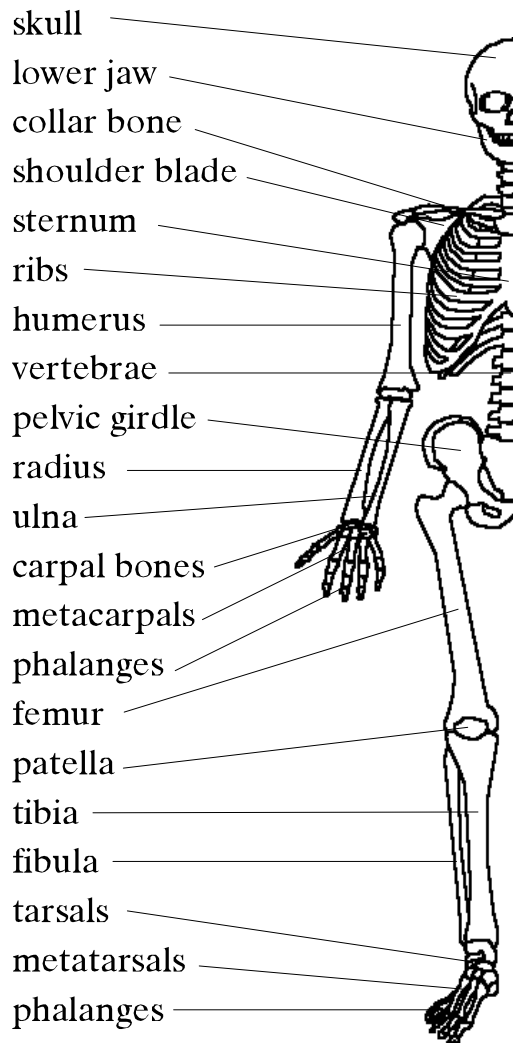


Teacher's Note – The Skeleton



Suggested Activities:

- ❖ Try and obtain a skeleton or a large poster displaying the skeleton.
- ❖ Have the children identify the bones on the skeleton without looking back at their worksheet for the answers.
- ❖ Use this worksheet in conjunction with 'The Human Body' worksheet. Available from P.E.T.

Task: Draw and label a skeleton

Learning Area: Health Education, health of individuals & populations

Linking Learning Areas: English reading, writing. Science biological.